

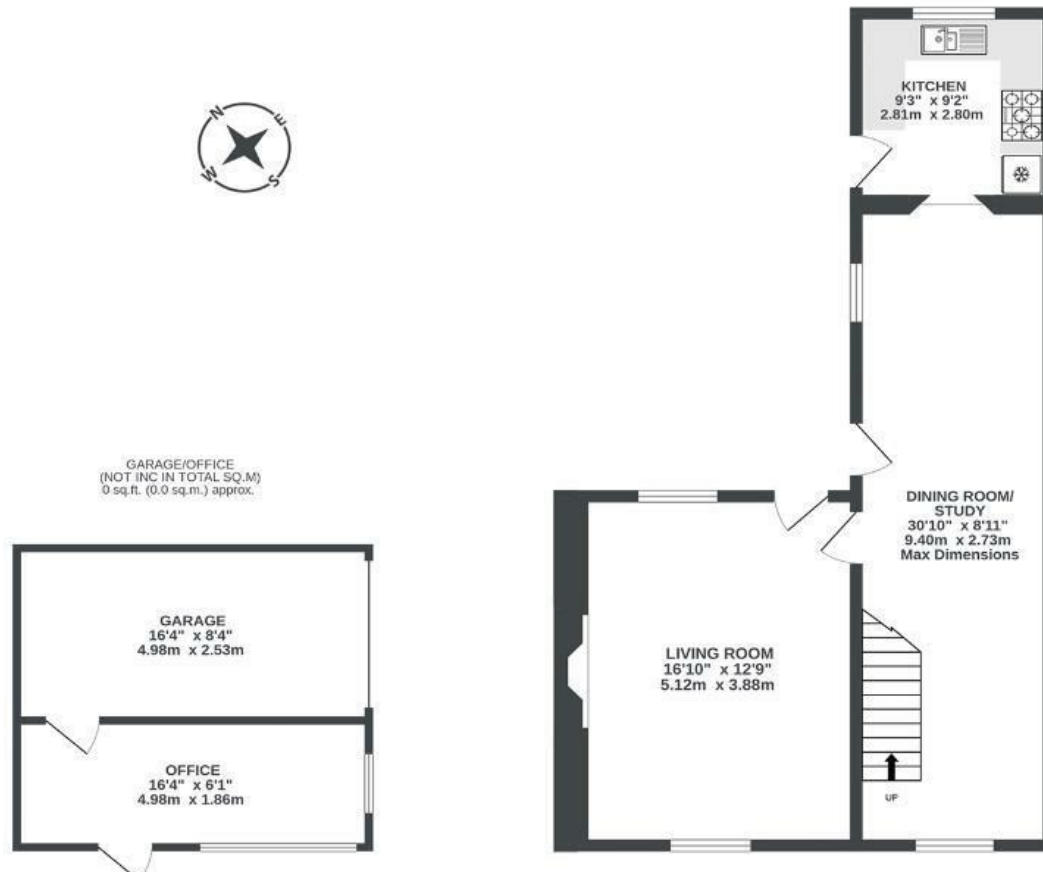
Napier Cottages

KINGSWESTON

APPROXIMATE FLOOR AREA
98.3 SQM / 1058 SQFT



GROUND FLOOR
572 sq.ft. (53.2 sq.m.) approx.



1ST FLOOR
486 sq.ft. (45.1 sq.m.) approx.



Illustrations are for reference purposes only, measurements are approximate, not to scale.

Boardwalk

Kings Weston

KINGSWESTON, BRISTOL



£400,000



BS11 0UR



3 Bedrooms



1 Bathrooms

"We have absolutely loved living in the cottage. We love that it is surrounded by the Kings Weston and Blaise estates so we have beautiful leafy walks on our doorstep. The Blaise Inn is a great foody pub and only a mile away. The cottage is very homely and cosy, and we've been careful to maintain the character of the property. The lounge in particular is a lovely place to relax with its large fireplace and log burner. The garden is beautiful in the summer - perfect for barbeques with friends."

